

# CORN



## SEASON-LONG PEST PROTECTION

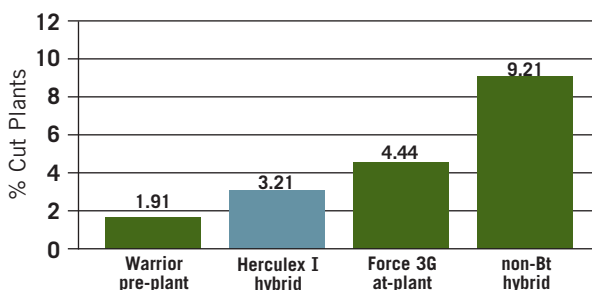


**Herculex I provides corn hybrids with advanced, full-plant insect protection.**

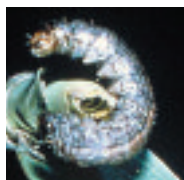
Advanced technology in Herculex I corn hybrids delivers highly effective control for a broad spectrum of yield-robbing insects. Using the Cry1F gene, Herculex I provides whole-plant protection against:

- First- and second-generation European corn borer
- All generations of southwestern corn borer
- Black cutworm
- Fall armyworm
- Western bean cutworm
- Corn earworm (intermediate suppression)

### BLACK CUTWORM STAND PROTECTION

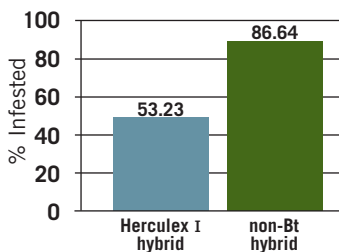


Dow AgroSciences 2002–2003 research data pooled across 17 locations under conditions of artificial infestation from IA, IL, IN, KY, MO, NC, OH and PA.



**Herculex I provides very good protection against stand loss from black cutworm, comparable to that provided by insecticide programs.**

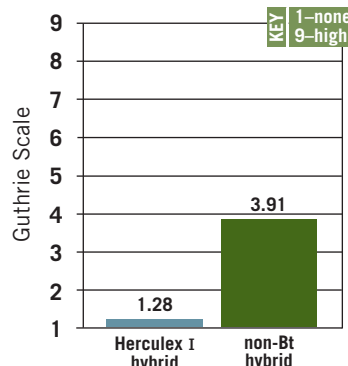
### CORN EARWORM EAR SUPPRESSION



**Herculex I suppresses corn earworms.**

Dow AgroSciences 2000–2002 research data pooled across 8 locations from university, private and Dow AgroSciences trials in IL, IN, MN, MO and MS. Herculex I provided significant suppression when compared to non-Bt hybrid (LSD,  $p=0.05$ ).

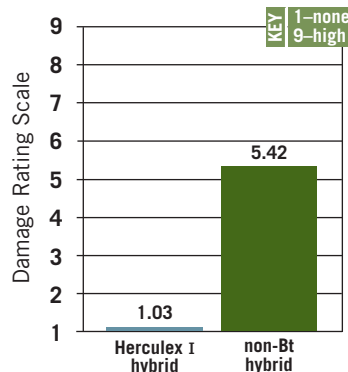
### FIRST-GENERATION ECB WHORL PROTECTION



**Herculex I provides excellent protection from first-generation European corn borer damage.**

Dow AgroSciences 2000–2003 research data pooled across 20 locations from university, private and Dow AgroSciences trials in IA, IL, IN, MI, MO, NE, OH, SD and WI. Herculex I provided significantly better protection than non-Bt hybrid (LSD,  $p=0.05$ ).

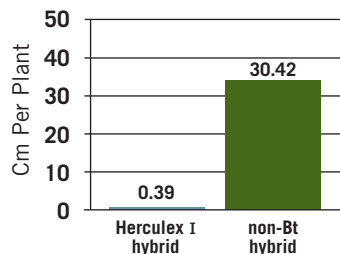
### FALL ARMYWORM WHORL PROTECTION



**Herculex I provides excellent protection from whorl feeding by fall armyworms.**

Dow AgroSciences 2000–2003 research data pooled across 9 locations from USDA, private and Dow AgroSciences trials in GA, IN, KY, LA and MS. Herculex I provided significantly better protection than non-Bt hybrid (LSD,  $p=0.05$ ).

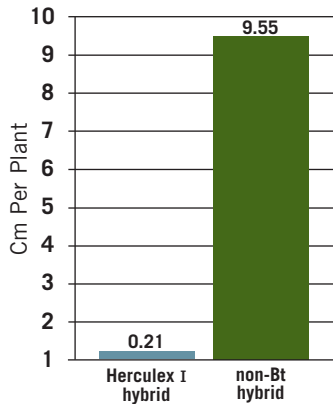
### SECOND-GENERATION SWCB STALK PROTECTION



**Herculex I provides excellent protection of stalks from tunneling by southwestern corn borers.**

Dow AgroSciences 2000–2002 research data pooled across 12 locations from university, private and Dow AgroSciences trials in IL, KS, KY, MO, MS, OK and TX. Herculex I provided significantly better protection than non-Bt hybrid (LSD,  $p=0.05$ ).

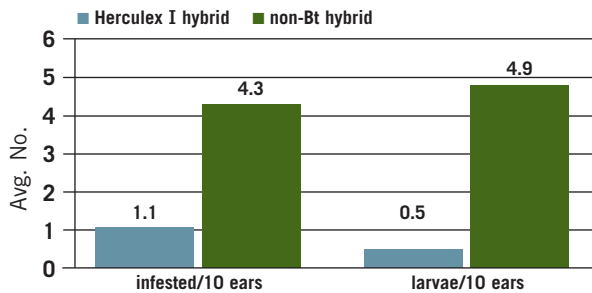
## SECOND-GENERATION ECB STALK PROTECTION



Herculex I provides excellent protection of stalks and shanks from tunneling by European corn borers.

Dow AgroSciences 2000–2002 research data pooled across 23 locations from university, private and Dow AgroSciences trials in IA, IL, IN, KY, MI, MN, MO, NE, NY, OH, SD and WI. Herculex I provided significantly better protection than non-Bt hybrid (LSD,  $p=0.05$ ).

## WESTERN BEAN CUTWORM PROTECTION



Dow AgroSciences 2000–2003 research data pooled across 8 locations from university, private and Dow AgroSciences trials. Herculex I provided significant suppression when compared to non-Bt hybrid (LSD,  $p=0.05$ ).



Herculex I provides highly significant control against western bean cutworm. Herculex I is the only in-plant option available against western bean cutworm.

## IN-PLANT PROTECTION

Throughout the season, Herculex I offers complete and continuous full-plant insect protection that stops pests before they damage plants. By protecting the entire plant, corn health is protected and standability is improved for top yield potential and harvestability.

## HERBICIDE TOLERANCE

For extra weed-control flexibility, hybrids containing Herculex I technology are resistant\* to Liberty herbicide when applied over the top according to the Liberty herbicide label.



\* Herculex corn contains a gene that makes it tolerant ONLY to glufosinate ammonium herbicides such as Liberty herbicide. This herbicide-resistant gene will NOT safeguard this hybrid against application of other herbicides. Accidental application of other herbicides to this hybrid could result in total crop loss.

## HYBRID AVAILABILITY

Herculex I is available in a variety of top-performing hybrids. The full-plant, full-season insect protection it provides helps ensure that strong hybrids reach their maximum yield potential. Plus, Herculex I technology is not disruptive to nontarget species and beneficial insects. It also reduces the need for some insecticide treatments.

## IRM GUIDELINES

Growers who plant corn hybrids with Herculex I are responsible for following insect resistance management (IRM) guidelines, including:



- Plant a non-Bt refuge within at least one-half mile of fields planted with Herculex I hybrids.
- Plant 20 percent of all corn acres as a non-Bt or non-ECB corn refuge or a 50 percent refuge in corn/cotton areas.

## GRAIN MARKETING GUIDELINES

Herculex I is a Market Choices product. Grain harvested from products that bear this mark is fully approved for food and feed use in the United States and Japan, but is not approved in the European Union. You must find a market for this crop that will not ship this grain or its processed products to Europe.



Appropriate markets for this grain include domestic feed use or grain handlers who specifically agree to accept this grain and handle it appropriately. For more information on your grain market options, go to the American Seed Trade Association's Web site at [www.amseed.org](http://www.amseed.org) or contact your HYTEST SEEDS seed specialist.



For more information, check Know Before You Grow, an information service provided by the National Corn Growers Association, at [www.ncga.com](http://www.ncga.com).