



## SEEDLING PROTECTION



Cruiser Extreme Pak, a unique seed-applied combination of a systemic insecticide and three proven fungicides, offers corn growers superior protection against a broad spectrum of early-season insect pests and diseases. Cruiser Extreme Pak protects against diseases in all four major fungal groups that can cause slow growth and damping-off of the seedlings, which can lead to reduced stand, vigor and ultimately yield loss. Cruiser Extreme Pak combines Cruiser seed treatment insecticide and Maxim XL, Apron XL and Dynasty seed treatment fungicides to help provide outstanding crop quality and protect yield potential.

### CRUISER

Cruiser seed treatment insecticide protects corn plants from a broad spectrum of early-season insect pests—wireworm, seed corn maggot, white grub (including grape colaspis), corn flea beetle, southern corn leaf beetle, chinch bug and black cutworm (suppression)—to help get crops off to a healthy, vigorous start. Cruiser also protects against corn rootworm and billbug at a higher application rate.

### MAXIM XL

A prepack of Maxim 4FS and Apron XL seed treatment fungicides, Maxim XL provides effective protection against several of the key plant pathogens affecting corn, including *Fusarium* and *Pythium*.

### DYNASTY

New Dynasty seed treatment is a broad-spectrum systemic fungicide providing protection against disease in all four classes of fungal pathogens, with activity on *Pythium*, *Fusarium* and *Rhizoctonia*.

### APRON XL

Cruiser Extreme Pak includes additional Apron XL (1.0 g a.i./100 kg of seed) to enhance the protection against *Pythium* and provide added residual activity.

### ADVANTAGES OF CRUISER EXTREME PAK

- Delivers an average of 5 bushels per acre extra\* with new Dynasty fungicide, available only in Cruiser Extreme Pak
- Allows corn crop to get off to a fast, vigorous start
- Protects plant stand, vigor and yield
- Superior disease and insect protection
- Allows HYTEST SEEDS hybrids to realize their full genetic potential
- Systemic protection against early-season sucking and chewing insect pests
- Unique combination of contact and systemic protection against seedborne and soilborne diseases
- Conveniently delivered in the bag already treated, saving time at planting
- All product components applied at low use rates
- Polymer system added to improve handling, plantability and dust-off
- Excellent crop, worker and environmental profile
- No chemical container disposal or special planter equipment required

\*Based on 120 university, third-party Syngenta plots between 2001 and 2003, which showed an average yield increase of 5 bushels per acre, compared to standard seed treatment. The actual yield increase in any given situation depends on many factors, and Syngenta makes no representations, warranties or guarantees regarding the actual yield increase in your acres.

FIELD CORN SEEDLING DISEASE AND INSECT EFFICACY

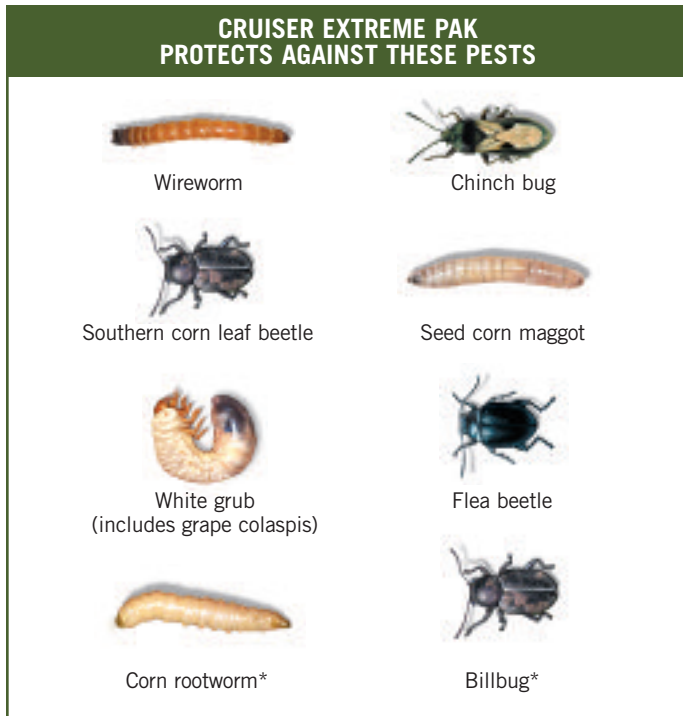
PRODUCTS	Disease					Insect							
	<i>Fusarium</i>	Seedborne <i>Diplodia</i>	Seedborne <i>Penicillium</i>	<i>Pythium</i>	<i>Rhizoctonia</i>	Wireworm	White Grub/ Grape Colaspis	Black Cutworm	Seed Corn Maggot	Flea Beetle	Chinch Bug	Southern Corn Leaf Beetle	Corn Rootworm (all species)
Cruiser Extreme Pak	1	1	1	1	1	2	2	3	2	1	2	1	NL
Poncho 250						2	2	3	2	1	2	1	NL
Cruiser Extreme Pak CRW*	1	1	1	1	1	1	1	2	2	1	1	1	3
Poncho 1250						1	1	2	2	1	1	1	3
Force 3G						2	2	1	2	NL	5	NL	1

1 = Excellent activity 2 = Very good activity 3 = Good activity 4 = Fair activity 5 = Poor NL = Not labeled

\*The rate of Cruiser in Cruiser Extreme Pak CRW (Corn Rootworm) is 1.25 mg a.i./seed.

## BROAD-SPECTRUM INSECT AND DISEASE PROTECTION

Cruiser Extreme Pak offers a unique combination of active ingredients that work together to provide premium insect and seedling disease protection. Combining Cruiser seed treatment insecticide with three proven seed treatment fungicides, Cruiser Extreme Pak is the next step in seed treatment offerings for superior protection against early-season insects and disease.



Cruiser Extreme Pak also provides suppression of black cutworm.

\*A higher rate (1.25 mg a.i.) is needed for control of billbug and corn rootworm.

## OUTSTANDING DISEASE CONTROL

Cruiser Extreme Pak controls the following seedborne and seedling diseases:

- *Fusarium*
- *Cladosporium*
- *Alternaria*
- *Rhizoctonia*
- *Aspergillus*
- *Diplodia*
- *Helminthosporium*
- *Pythium*
- *Penicillium*

## PERFORMANCE RESULTS

Due to its superior performance, Maxim XL seed treatment fungicide has set the standard for early-season disease control in corn. Adding Dynasty offers unique systemic activity against a number of seedborne diseases, complementing the contact and systemic activity provided by Maxim XL, and broadening the range of disease protection to include more seedborne and soil seedling diseases. Cruiser Extreme Pak also includes additional Apron XL (1.0 g a.i./100 kg of seed) to enhance the protection against *Pythium* and provide added residual activity. Studies show corn seed treated with this combination results in better stand, vigor and yield.

## CRUISER EXTREME PAK:

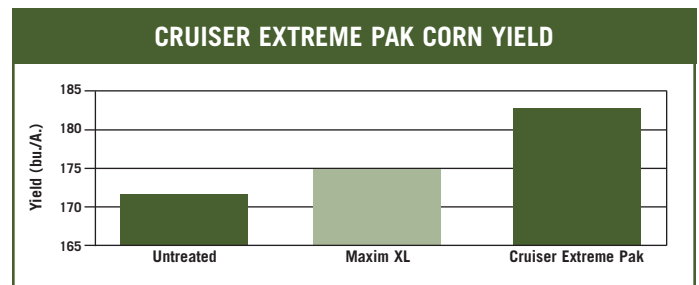
### A STEP UP IN EARLY-SEASON CROP PROTECTION

Recent trends toward earlier planting dates and reduced tillage practices increase the likelihood of having to contend with early-season insect pests, as well as seed and seedling disease infections, making it more critical than ever for growers to protect their corn crop from the day it is planted. Providing superior insect and seedling disease protection, Cruiser Extreme Pak is a huge step forward in early-season crop protection.

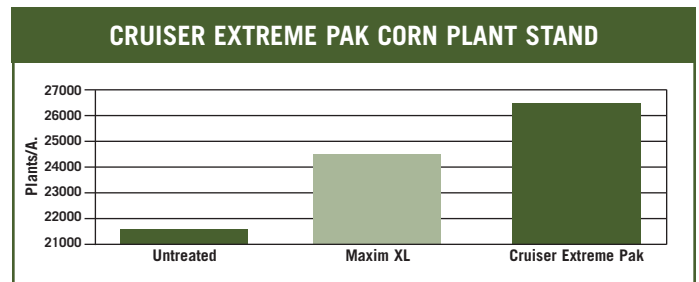
## CRUISER EXTREME PAK CRW:

### COMPLETE PROTECTION PLUS CORN ROOTWORM

Cruiser Extreme Pak CRW provides a higher application rate of Cruiser than the standard Cruiser Extreme Pak combination to effectively protect against corn rootworm in addition to a wide range of early-season insect pests. Cruiser Extreme Pak CRW also combats disease by supplying the most robust fungicide package on the market, including innovative Dynasty seed treatment fungicide. Cruiser Extreme Pak CRW provides the insect and disease control you need with additional protection against corn rootworm.



All 21 trials with yield, 84 plots



Source: Syngenta, 2003, 16 locations, 64 plots

Syngenta Crop Protection, Inc. warrants that its products conform to the chemical description set forth on the products' labels. NO OTHER WARRANTIES, WHETHER EXPRESS OR IMPLIED, INCLUDING WARRANTIES OF MERCHANTABILITY AND OF FITNESS FOR A PARTICULAR PURPOSE, SHALL APPLY TO SYNGENTA PRODUCTS. Syngenta Crop Protection, Inc. neither assumes nor authorizes any representative or other person to assume for it any obligation or liability other than such as is expressly set forth herein. IN NO EVENT SHALL SYNGENTA CROP PROTECTION, INC. BE LIABLE FOR INCIDENTAL, CONSEQUENTIAL OR SPECIAL DAMAGES RESULTING FROM ANY USE OR HANDLING OF ITS PRODUCTS. No statements or recommendations contained herein are to be construed as inducements to infringe any relevant patent now or hereafter in existence.